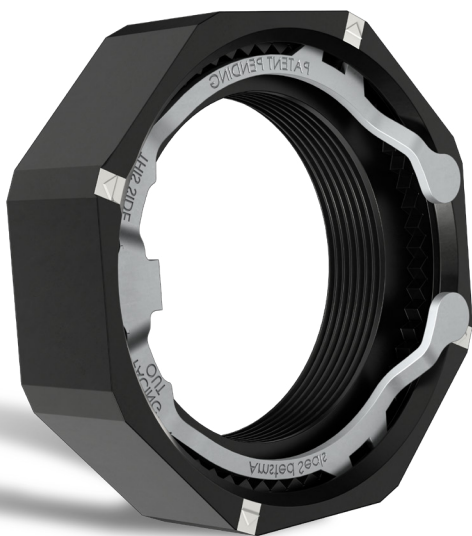
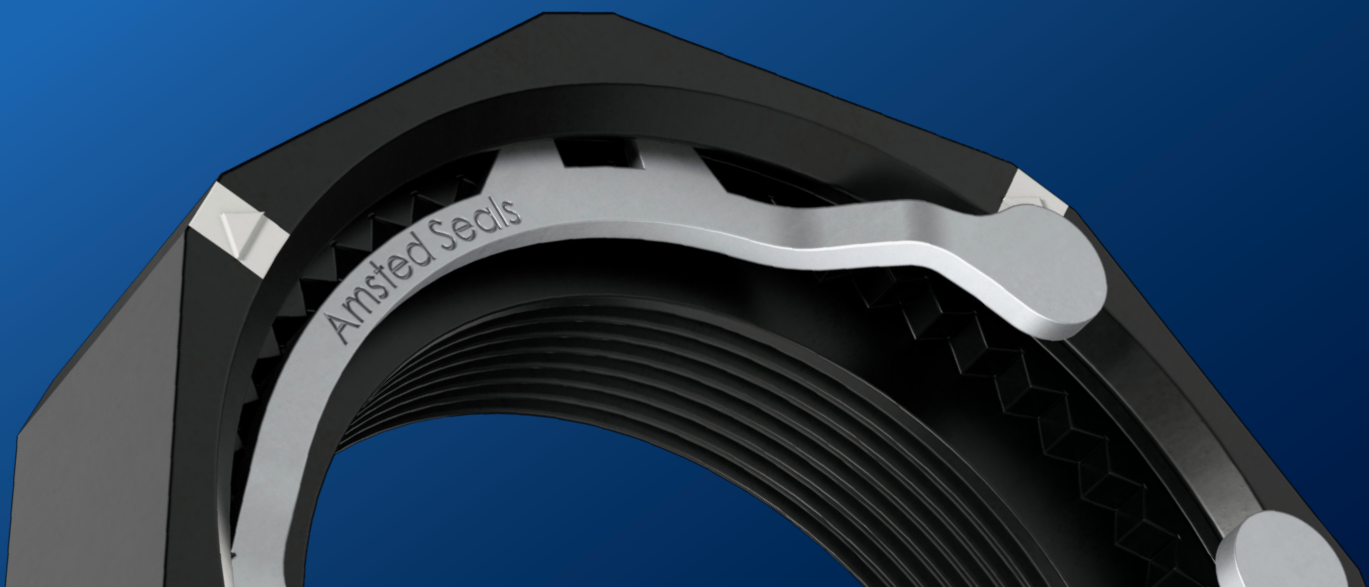


COMMERCIAL VEHICLE **PRO-LOCK™ AXLE FASTENER**

The precision of the Amsted Seals® Pro-Lock™ axle fastener limits wheel-bearing adjustment variability, extending the life of the tire and the wheel seal. The patent pending design makes for quick and easy installation, reducing the likelihood of displacing the outer bearing and limiting the possibility of incorrect keeper ring installation in comparison to competitors' older products.



FEATURES & BENEFITS

- White stripes painted on the nut allow technicians to more easily judge how far they have backed off the nut during installation.
- Chamfers on both the nut and keeper ring allow for easy installation without any tools.
- The keeper will eject if not properly snapped in the groove, reducing the possibility of incorrect installation.
- Increases precision of bearing adjustment down to .001" which increases the life of the seal and the bearings.
- Helps maximize tire tread life.

COMMERCIAL VEHICLE PRO-LOCK™ AXLE FASTENER INTERCHANGE

Amsted Seals® Pro-Lock Axle Fastener	Axle	Thread Size	Outer Bearing	Tool Socket	Keeper Replacement	Amsted Seals® Part Number	STEMCO	Axilok	Triseal
PL-TN-10	Dana Spicer, Eaton, Hendrickson, Ingersoll, Meritor, Standard Forge	2.625	AS212049/ AS212011	3.750	PL-TN-02	TN-ED-NR-00	447-4743	AX 16-2625	416-2625
PL-TP-10	Dana Spicer, Fruehauf, Hendrickson, Ingersoll, Meritor	3.48	AS518445/ AS518410	4.8125	PL-TP-02	TP-ED-NR-00	447-4723	AX 12-3480	412-3480
PL-FG-10	Dana Spicer, Eaton, Fruehauf, Meritor, Standard Forge	1.500	AS3782/ AS3720	2.500	PL-FG-02	FL-ED-NR-00	448-4836	AX 12-1500	412-1500
PL-FF-10	Eaton, Ford, Meritor	1.500	AS3782/ AS3720	2.500	PL-FF-02	FF-ED-NR-00	448-4837	AX 18-1500	418-1500
PL-DR-10	Dana Spicer, Meritor, Eaton	3.250	AS580-572	4.375	PL-DR-02	DR-ED-NR-00	449-4973	AX 12-3250	412-3250

SCAN HERE TO
VIEW ONLINE



+1.312.596.5699 • 311 S. Wacker Drive, Suite 5300 Chicago, IL 60606

www.amstedseals.com